

# IBM Storage Defender

Unified data resilience  
for enterprise data storage



## Highlights

Streamlines data recovery  
with granular control

Offers simplified credit  
based licensing

Functions seamlessly with  
modern IT environments

Enhances data resilience  
with multiple layers of  
protection and recovery

Around the globe, across every industry, organizations face increasingly severe threats to their information supply chains. According to the 2022 IBM Cost of Data Breach Report<sup>1</sup>:



Of more than 500 organizations surveyed,  
83% have suffered more than one data breach.



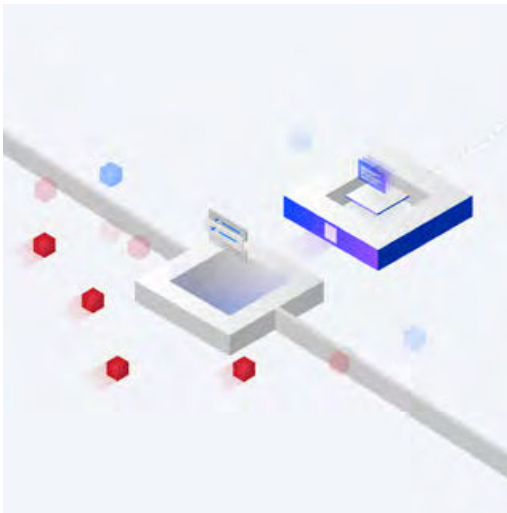
The average cost of a data breach in the United States  
was over USD 9 million.



The average time to identify and contain  
a data breach was 277 days.

Ransomware and other forms of malware are the most visible threats, but IT organizations face many other risks, including hardware failures, human error, natural disasters and sabotage.

IBM® Storage Defender delivers end to end data resilience by combining backup and storage management solutions from across the IBM Storage portfolio with IBM Business Partner capabilities into one comprehensive package, while still providing the flexibility to choose the capabilities that are right for your enterprise. IBM Storage Defender supports both primary and backup data storage with features you've come to expect from IBM including immutability, air gap, encryption, isolation and anomaly detection. IBM Storage Defender also helps deliver rapid business recovery as well as full company recovery from infrastructure failures, natural disasters and cyberattacks.



IBM Storage Defender is a data resiliency solution that features exceptional scalability, broad application support, cost-saving data reduction technologies (such as “incremental forever,” deduplication and compression), flexible data retention on tape and immutable object storage, and multiple layers of cyber resilience. It enhances cyber resilience with inline data corruption detection, creating highly secure and immutable copies, and deep scanning application-consistent copies to look for anomalies and potential malware. IBM Storage Defender now has additional automation built in that accelerates safe recovery of your mission critical workloads. It also includes an AI powered Trust Index that provides you with a score to indicate the relative trustworthiness of your copies by combining signals from existing solutions and new detection methodologies unique to Defender developed by IBM Research.

#### **Streamlines data recovery with granular control**

Data managed by IBM Storage Defender is replicated to offsite recovery facilities for safekeeping. Doing this helps deliver fast, flexible restores from primary and remote recovery sites so you can recover individual items, complex systems and entire data centers.

IBM Storage Defender delivers near instantaneous recovery of primary workloads from a copy on a production array, can store data in a lower cost storage medium such as tape or your cloud environment, and enables you to conduct forensic analysis on a corrupted environment at a separate isolated location.

#### **Offers simplified credit based licensing**

IBM Storage Defender includes all IBM Storage for Data Resiliency capabilities, including data protection, copy data management and virtualization, consumable through credit-based licensing called resource units (RUs). RUs give you the flexibility to choose only the capabilities you need for your enterprise, helping you minimize costs and optimize resources.

#### **Functions seamlessly with modern IT environments**

IBM Storage Defender offers the capabilities needed in a modern IT environment consisting of virtual machines, databases, applications and file systems in hybrid cloud environments. SLA-based policies automate the entire data protection process, including backup, replication and secure data retention on premises and in the cloud.

- Scale out data protection for hyperscale VMware deployments as well as additional hypervisors such as Nutanix AHV, Hyper-V and RedHat® RHV
- Support for cloud VMs including AWS EC2, Microsoft Azure VM and GCP
- Advanced data protection for NoSQL workloads including Cassandra and MongoDB
- A wide range of database support including SAP, Oracle, MS SQL and IBM Db2®
- Unified visibility, policy and manageability for data

#### **Enhances data resilience with multiple layers of protection and recovery**

IBM Storage Defender also provides secure, incorruptible copies of data, with layers of protection, both on array and off array, to help ensure data is recoverable. Additionally, it supports IBM Safeguarded Copy which provides a virtual air gap by automatically creating point-in-time snapshots. For added data resilience, IBM Storage Defender also supports physical air gap data to tape systems such as the IBM Diamondback Tape Library.

**Conclusion**

IBM Storage Defender helps recover from data loss by integrating immutable backups, accelerating discovery of threats and orchestrating faster recovery. With IBM Storage Defender, you can gain enhanced protection for your corporate data, better integrate your data protection and data security solutions, and help reduce the complexity and cost of data storage management.

**Why IBM?**

IBM offers a vast portfolio of hardware, software and services to help organizations cost effectively address their IT infrastructure needs. These include robust data storage solutions to enable always-on, trustworthy storage and help expedite recovery from disasters. Because business needs shift, IBM solutions emphasize interoperability and the integration of new use cases or approaches, from analytics to multisite backup to near-instant recovery.

**For more information**

To learn more about IBM Storage Defender, contact your IBM Business Partner:

COMPANY NAME - VALUE

PHONE - VALUE | EMAIL - VALUE

WEBSITE - VALUE

© Copyright IBM Corporation 2023

IBM Corporation  
New Orchard Road  
Armonk, NY 10504

Produced in the  
United States of America  
October 2023

IBM, the IBM logo, and Db2 are trademarks or registered trademarks of International Business Machines Corporation, in the United States and/or other countries. Other product and service names might be trademarks of IBM or other companies. A current list of IBM trademarks is available on [ibm.com/trademark](http://ibm.com/trademark).

Microsoft is a trademark of Microsoft Corporation in the United States, other countries, or both.

VMware is a registered trademark or trademark of VMware, Inc. or its subsidiaries in the United States and/or other jurisdictions.

Red Hat is a trademark or registered trademark of Red Hat, Inc. or its subsidiaries in the United States and other countries.

This document is current as of the initial date of publication and may be changed by IBM at any time. Not all offerings are available in every country in which IBM operates.

It is the user's responsibility to evaluate and verify the operation of any other products or programs with IBM products and programs.

THE INFORMATION IN THIS DOCUMENT IS PROVIDED "AS IS" WITHOUT ANY WARRANTY, EXPRESS OR IMPLIED, INCLUDING WITHOUT ANY WARRANTIES OF MERCHANTABILITY, FITNESS FOR A PARTICULAR PURPOSE AND ANY WARRANTY OR CONDITION OF NON-INFRINGEMENT.

